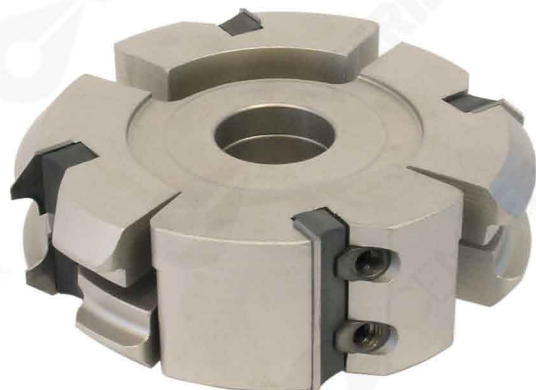


TFM10A

Set di teste regolabili per contornare con anelli

Adjustable cutterheads set for contours with rings



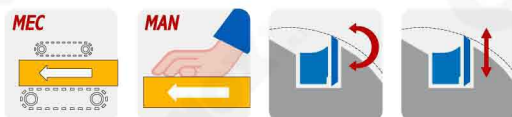
CODICE CODE	D mm	B mm	d* mm	Z	R	RIF
TFM10A.001	100	30	30 (35)	2		B
TFM10A.002	100	50	30 (35)	2		B
TFM10A.003	140	30	35 (40)	2		B
TFM10A.004	140	50	35 (40)	2		B
TFM10A.005	116	20	30 (35)	2	2/3/4/5/6/7/8	A
TFM10A.006	116	20	30 (35)	2	2/3/4/5/6/7/8	C
TFM10A.007	154	20	35 (40)	2	2/3/4/5/6/7/8	A
TFM10A.008	154	20	35 (40)	2	2/3/4/5/6/7/8	C

In fase di ordine, indicare il codice dei coltelli sagomati da montare

When ordering, indicate the code of knives to fit

* La quota tra parentesi è la massima allargatura foro possibile

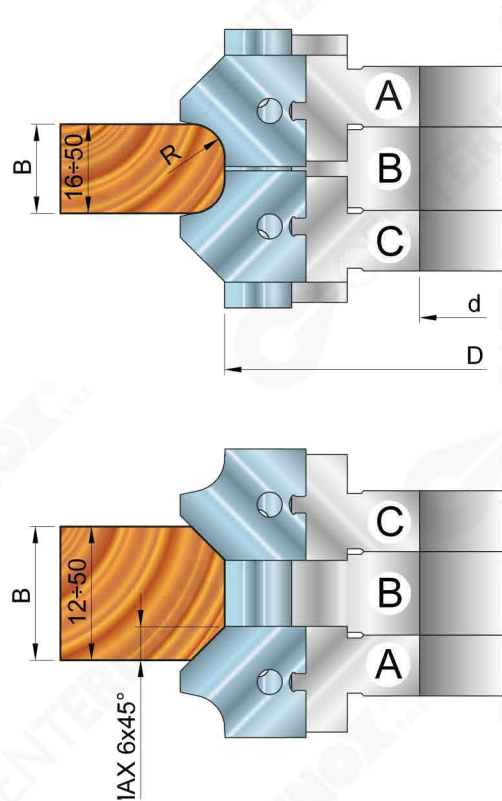
* The maximum inner hole size it is shown between the brackets



Utensile collaudato
secondo la normativa
Tool tested
according to the norm

EN 847-1

CODICE CODE	PARTI DI RICAMBIO SPARE PARTS		RIF
GRN1DX-SX	VITE / SCREW	M8-M6	A-B-C
OGV1SB	OGIVA / NUT	M8	A-B-C
T19SB	CUNEO / WEDGE	19mm	A-C
T29SB	CUNEO / WEDGE	29mm	B
T49SB	CUNEO / WEDGE	49mm	B
012L30	COLTELLO / KNIFE	30X12X1.5	B
012L50	COLTELLO / KNIFE	50X12X1.5	B



CODICE CODE	COLTELLO KNIFE	R	CODICE CODE	COLTELLO KNIFE	R
CLT10A/2A 20X20X2		2	CLT10A/2C 20X20X2		2
CLT10A/3A 20X20X2		3	CLT10A/3C 20X20X2		3
CLT10A/4A 20X20X2		4	CLT10A/4C 20X20X2		4
CLT10A/5A 20X20X2		5	CLT10A/5C 20X20X2		5
CLT10A/6A 20X20X2		6	CLT10A/6C 20X20X2		6
CLT10A/7A 20X20X2		7	CLT10A/7C 20X20X2		7
CLT10A/8A 20X20X2		8	CLT10A/8C 20X20X2		8